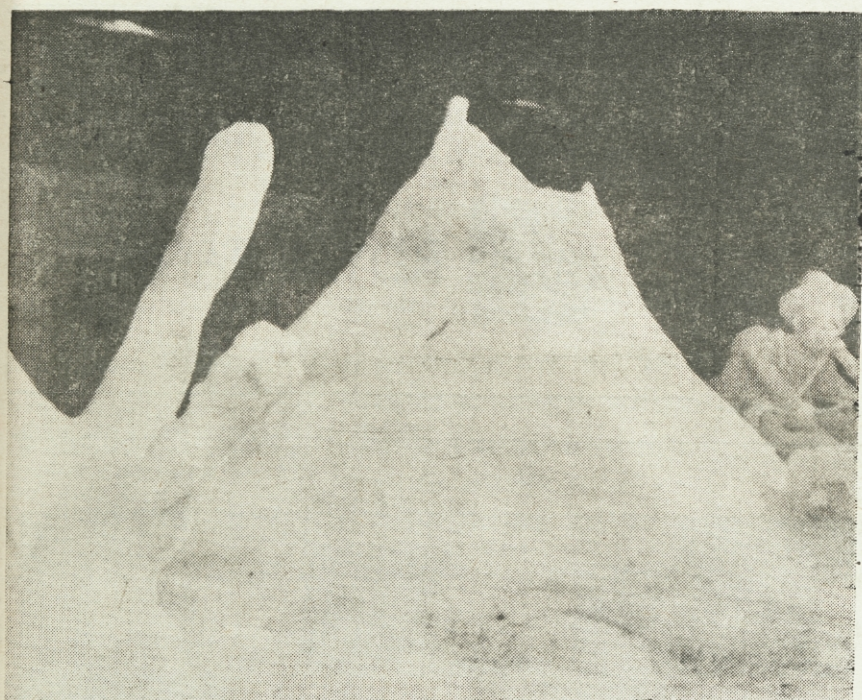




LT. COL. THE HONOURABLE W. J. MacDONALD, Lieutenant-Governor of P.E.I., officially opens the Carnival. Observing the ribbon-cutting are, from L-R, Carnival Chairman, Bob Lymburner; Business Manager, John O'Connell; SDU President, Rt. Rev. Monsignor G. A. MacDonald and Vice Carnival Chairman, Matthew Hart.



A LARGE CROWD enjoyed the Carnival Variety Show. Pictured are popular folk singers Randy Dibblee and Dorothy Morris.



THE SENIOR CLASS rendition of Mark Twain's Huckleberry Finn, casually drifting along the frozen Mississippi, took first honors in the Snow Sculpture Judging. Second place went to the Sophomores for their depiction of Hockey at SDU.



REIGNING CARNIVAL QUEEN, Miss Betty Lou Doyle, the Engineering Representative, drops the first puck to open the Dalhousie - St. Dunstan's Carnival hockey game. Miss Doyle was named on Thursday evening and officially crowned at the Carnival "Snowball".



SPORTS PLAYED A PROMINENT part in the three days of festivity. The Varsity Saints added to the Carnival spirit by fighting (above) to their fifth consecutive victory. The contest was a prelude to the all-important St. F. X. game two days later.



CENTRE "JAKE" DESSERAULT vaults high into the air to snare a Dalhousie rebound. The hard-luck Saints battled on even terms for most of the game, but were nosed out in an exciting final five minutes. Watching in absolute awe is speedy forward Posty Connolly.