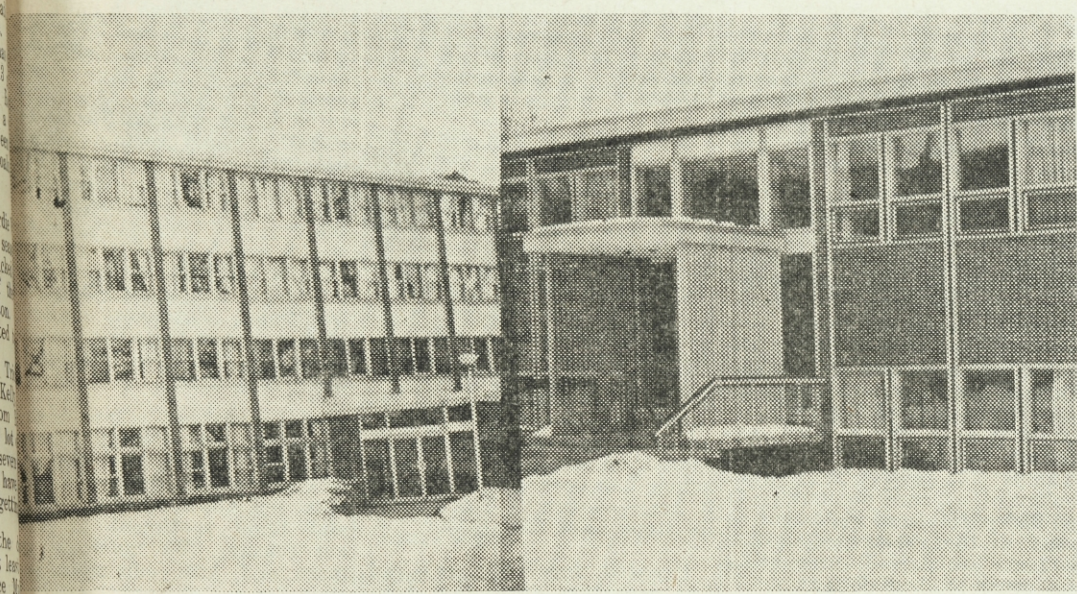


P.E.I. TO GIVE GRANTS TO ISLAND U's



UNIVERSITY OF PRINCE EDWARD ISLAND

S. D. U. TO HAVE MODEL PARLIMENT

For the first time in six years, St. Dunstan's is to have a model parliament. The Model Parliament, which is being co-sponsored by the Students' Union, is a special project of the Liberal and Conservative Clubs on campus. St. Dunstan's will be the scene of a three day election campaign, and the Prince Edward Island Legislature the stage for the one and half day parliamentary session.

The election of the model parliament will be based on the party system with both the Liberal and Progressive Conservatives advancing a slate of thirty candidates; the number of seats each will have in the parliament is to be determined by the popular vote on election day.

The model parliament is being financed by the respective provincial organizations of the Liberal and Conservative parties, the campus political clubs, and the Students' Union. At a regular meeting of the Students' Council, a motion was passed making available \$150.00 to help defray the costs of the project. As co-sponsor of the parliament, the Students' Union will supervise the nominations of candidates and the election. The list of candidates for both parties has been compiled and led officially with Student Union Secty. Veronica Swift.

At a caucus of Liberal candidates, Senior Arts student Mary MacAleer was elected

Party Leader of the Liberals for the model-parliament. Besides being a member of the St. Dunstan's championship debating team, Mr. MacAleer has been very active in varsity sports. Chief party organizer for the Liberal election campaign will be Liberal Club President Mary Cullen.

Philip MacDonald, twice President of the Progressive Conservative Club on campus, was elected Party Leader of the Conservatives by the party caucus. Mr. MacDonald has two years experience with the SDU debating team; has been a member of the St. Dunstan's CUS Committee; and was for two years a member of the National Executive of the Progressive Conservative Party of Canada.

Both the Liberal and Conservative Clubs have been active for the past two weeks -- formulating policy, planning strategy, and preparing for the election generally. The three-day election campaign begins officially Monday February 28 with the parliament sitting Friday evening, March 4, and all day Saturday.

Though arrangements have not been finalized, it is believed that prominent men of the political and legal professions will officiate as Governor General Speaker of the House, and Parliamentary Clerk.

The Candidates

The following students have officially been nominated as candidates of the Progressive Conservative and Liberal clubs in the Saint Dunstan's University Model Parliament, March 1966:

PROGRESSIVE CONSERVATIVE CANDIDATES

Arnold F. Doucette	Arts
Robert Chornenki	Comm.
Mary Cain	Arts
Imelda Murnaghan	Arts
Diane Laughlin	Arts
Tommie Green	Comm.
Janet Shea	Arts
Joan Duffy	Arts
Jean P. Andrieux	Comm.
Paul Gray	SC.
Jackie Rossiter	Comm.
Phillip McDougall	Comm.
George Morrison	Arts
Sherrill Barwise	SC.
Margaret Ann Warren	Arts
Winston McGregor	Arts
Donna Murphy	Arts
Rita Curren	Arts
John Williams	Arts
Edward Richard	SC.
Vince Mulligan	Arts
Glenn Hughes	Arts
Warren Harvey	Arts
John Driscoll	Arts
Phillip McDonald	Arts
Tom McMillan	Arts
Margaret MacAulay	Arts
Allan Connolly	Arts
Gerry Doyle	Arts
Art Noonan	SC.

LIBERAL CANDIDATES

Frank Kelly	SC.
Leonard Gaudet	SC.
Ivanhoe Chevanee	Comm.
Tom Gallant	Arts
Mike MacCormack	Comm.
Gemma Dunn	Arts
Pat Sinclair	Arts
Leo Broderick	Arts
Paul Hickey	Arts
Bill Morse	Arts
Eldon Jamieson	Arts
Joe McGuire	Arts
Liz Lawlor	Arts
Mary Cullen	Arts
Harry Gaudet	Arts
John O'Malley	Arts
Jack Ranatoni	Arts
Mike O'Brien	Arts
Dave Mullally	Arts
Mike Kelly	Arts
John Rowe	Arts
Alex MacAulay	Arts
Paul B. Kelly	SC.
Mark MacPherson	Arts
Dick Trotter	Arts
Wes MacAleer	Arts
Dave Campbell	Comm.
Joe Condon	Comm.
Gene McLaughlin	Comm.
Lynn O'Connor	Arts

of local candidates. Members of the board were: the Rt. Rev. George MacDonald, Rev. F. Bolger, Rev. O. Sharkey, Rev. T. MacLellan, Sister Louis Marie, Mr. D. O'Connell, and David Morton.

RETREAT

From March 3rd to 6th the students of St. Dunstan's University will take time out from their usual routine of class and study to reflect on this crucial question: CAN FAITH MEET THE CHALLENGE OF OUR CHANGING WORLD?

In a serious effort to find an answer to this vital question Rev. James Kelly, University Chaplain, has announced that the University will depart from the traditional format of a Closed Retreat. Instead of holding two separate compulsory retreats - one for men and one for women - this year a special "University Renewal" will be held for both men and women.

The Renewal will be directed by Rev. Edward Boyce, C.S.S.R. of Windsor, Ontario. Father Boyce, a sociologist, is a specialist in "our changing world" and as a modern missionary is a specialist in the up-dated theology of Vatican II. Father Boyce is presently director of the General Mission programme of renewal in the London Diocese and also of the General Mission Centre in Windsor, Ontario. He is known locally for the two years he spent as an assistant priest at Holy Redeemer Church and also for the Parish Renewal that he is presently conducting at St. Pius X Parish, Parkdale.

In his directives from Windsor Father Boyce has made it clear that this Renewal will differ radically from the concept of a closed retreat. The accent will be on "group reflection and discussion" rather than on silence. Conferences will be given but they will be challenges to dialogue and discussion rather than lectures with ready-made answers. Both men and women will be free to attend the Renewal. Attendance is to be entirely a matter of free choice. The focal point of each day will be a Folk-Mass at 11 a.m.

The programme of the Renewal will be presented in detail at the opening session of the Renewal at 8:00 p.m. on Thursday evening, March 3rd. Father Boyce's one request of all students, of all denominations, is that they attend the opening session before they make their decision as to whether they will attend the renewal or not. He feels confident that once they hear the programme that they will see what a meaningful experience this renewal can be and that they will want to get involved in the Renewal.

BAND AND GLEE CLUB ARE HITS

The Saint Dunstan's University Band and Glee-Club showed the first effects of what it is like to be under the direction of a professional musician last Sunday night when they performed a "Musical Night" in the S.D.U. Gymnasium. Under the guidance of Mr. Hubert Tersteeg, the band and glee-club performed a variety of modern and classical numbers.

The band easily won their audience's approval with their fine handling of "The Saints" and "Greensleeves". They also showed themselves to be very capable of handling both of our national anthems.

(continued on page 6)

The speech from the Throne of the Prince Edward Island Legislature has forecast a heavy expenditure towards higher education. According to the Throne speech read last Thursday, the government will adopt a system of grants to St. Dunstan's University and Prince of Wales College in line with the recommendations of the Royal Commission.

Should the government carry out this promise at the present session, it would mark the first time in the history of the province that any government has made outright grants to higher education.

Last year a three man Royal Commission, consisting of Dr. John Sutherland Bonnell, Dr. J. A. MacMillan (now on the SDU Board of Governors), and Dr. Norman MacKenzie, advocated outright grants to the universities on the basis of 300 dollars per student.

The student enrollment of Prince of Wales and St. Dunstan's for next year has been projected at 400 and 695 students respectively. This would mean an operating grant to

each institution of 120,000 and 208,500 dollars. Nothing was mentioned in the throne speech on capital construction costs, and indications are that the government will not extend financial assistance beyond the operating grants.

However, with the federal aid to education increased to 5 dollars per capita (on the provincial population), the universities have a vastly increased budget. Prince Edward Island share in the federal assistance is 615,000, and according to the present basis of apportionment, this means an extra \$410,000 to St. Dunstan's, up approximately 162,000 dollars.

As yet, there has been nothing stated in the house on any changes in the structure of higher education, namely, any moves to federation or amalgamation of St. Dunstan's and Prince of Wales. The SDU Board of Governors has asked for a meeting with the PWC Board, and after several months, a meeting has been arranged. However, nothing definite is expected from this first consultation.

(continued on page 6)

GALLUP POLL

On Friday and Saturday of last week a Gallup poll was conducted by the Red and White in the five S.D.U. residences. The following two questions were asked of twenty students in each residence:

- 1) Do you think that the Model Parliament is a worthwhile project?
 - 2) How do you intend to vote?
- a) Liberal
b) Progressive Conservative
c) Undecided

The results were as follows:

Question 1:	DALTON	MEMORIAL	MAIN	ST. MARY'S	MARIAN
Yes	16	15	19	19	19
No	4	5	1	1	1
Question 2:					
Liberal	7	11	8	9	11
P.C.	5	3	6	8	8
Undecided	8	6	6	3	1

The results show 88% in favor of the Model Parliament, and 12% not in favor of it.

Forty-six per cent of those participating in this poll favored the Liberals, thirty per cent favored the Conservatives, and twenty-four per cent are undecided.

Those who conducted the poll in the respective residences

Memorial:	Roger Arsenault
Main Bldg.	Ken Morrison
Dalton	Eugene MacDonald
St. Mary's	Sheila MacDonald
Marian	Monica Clow

WOMEN DEBATERS WIN

The Saint Dunstan's University Women's Debating team, coached by Mr. D. J. O'Connell, unanimously won its second debate on Friday, February 25, by defeating a team from Dalhousie University.

Defending the negative side of the resolution: "Resolve that there should be a political and economic union of the Atlantic Provinces," Miss Yvonne Gallant and Miss Gemma Dunn posed convincing arguments that such a union would be impracticable at present, and thereby defeated the Dalhousie team of Cathy McKenzie and Isabel Gladney.

Gemma Dunn was by far the most impressive of the debaters. Her excellent presentation coupled with her logical arguments made Miss Dunn's main speech interesting and, at times, amusing.

Miss Gladney lacked strong arguments in her main speech and played the defensive role too much. She improved in

her rebuttal but was not forceful enough in her presentation.

Yvonne Gallant presented the most sound arguments of all the debaters in her opening speech but her delivery of the matter was somewhat shaky. Her rebuttal seemed to have been prepared in advance and not directly refuting the arguments of the opponents.

Miss McKenzie, the first speaker of the evening, seemed somewhat unsure of herself in her first speech but regained well, and presented the strongest of the four rebuttals.

Judges for this debate were Mrs. Julian Herring, Mr. Jack McAndrew, and Mr. Alfred Hennessey.

FOLK CONCERT

A folk-singing quartet from Halifax, the "Topsiders," will appear at the Saint Dunstan's University Gym on Saturday evening, March 12. This group of Dalhousie students will be the feature performers at a folk-concert to be sponsored by the S.D.U. Social Committee. Also appearing in the concert will be Saint Dunstan's own "Sons of Erin."

The "Topsiders" have performed concerts at almost every Maritime University and so have made special appearances at the Halifax Winter Carnival, radio station FDR's Folk Festival, and on B.C. television.

This will be the first Folk concert on S.D.U. campus, and the success of this will determine whether or not the Social Committee will bring another feature performer to our campus this year.

Further details on this concert will be advertised shortly.

S. D. U. STUDENT SELECTED

It was announced last week by the National Committee of World University Service of Canada that John Rowe has been selected for the Central WUSC Canadian Travel and Educational Seminar which will be held from May 27 to June 16, 1966. The Canadian Travel and Educational Seminars are administered by WUSC in collaboration with the Centennial Commission and the External Aid office of the Government of Canada.

Mr. Rowe, a Junior Arts student of S.D.U., is from Bedford, P.E.I. He has been chosen from over 100 candidates to visit and study Central Canada, its culture, problems, and aspirations.

Earlier, a nominating board was set up on this campus, under the chairmanship of Rev. James Kelly, for the screening